



Australian Government

Department of Health, Disability and Ageing

# Disability Safeguards Consultation

## Survey

### Part 1





**Australian Government**

**Department of Health,  
Disability and Ageing**

The Australian Government Department of Health Disability and Ageing wrote this.

We say **DHDA** for short.

When you see the word **we** it means DHDA.



We wrote this in an easy to read way.

We use pictures to explain some ideas.

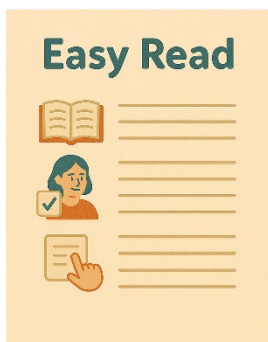
**Bold**

Not bold

We have some words in **bold**.

This means the letters are thicker and darker.

These are important words.



This is an Easy Read summary of another document.

This means it has the most important ideas.



We can answer any questions by email.

Email us

[disabilitysafeguards@ahaconsulting.com.au](mailto:disabilitysafeguards@ahaconsulting.com.au)



You can ask for help to read this document.

You can ask

- A friend
- Family members
- A support person.



We recognise Aboriginal and Torres Strait Islander people as the **Traditional Owners** of the land we live on.



They were the **first people** to live on and use the

- Land
- Waters.

# Contents

|                             |    |
|-----------------------------|----|
| About this document         | 5  |
| What to do                  | 9  |
| About you                   | 11 |
| Who you are                 | 13 |
| What is your disability     | 17 |
| Where do you live           | 18 |
| What groups are you part of | 20 |

# About this document



This **survey** has **3 parts**.

Surveys have questions about your ideas.



You can read the **consultation** paper on our website.

[consultations.health.gov.au/disability-and-carers-group/disability-safeguards-consultation/](https://consultations.health.gov.au/disability-and-carers-group/disability-safeguards-consultation/)

It is in Easy Read.



Consultation is when the government works with the disability community.

It makes sure that the government is listening to communities.

This helps the government make better plans to support people with disability.



The consultation paper explains about writing the

- Disability Support **Quality** and **Safeguarding Framework**

We call it the **Safeguarding Framework** for short.



Quality means services that

- Helps people



- People get what they need





- People feel happy with the service



- The service does everything they are supposed to.



Safeguarding means protecting people with disability from harm.



A framework is how we will do something.



- Disability Support **Ecosystem**  
Safeguarding **Strategy**

We call it the **Safeguarding Strategy** for short.



Ecosystem is everything working together.

This means that disability services work together to support people with disability.



A strategy is a plan for how to do something.



# What to do



You need to download all 3 parts of the surveys.

You can

- Write your answers



- Type your answers.



You need to send your answers back to us by email.

[disabilitysafeguards@ahaconsulting.com.au](mailto:disabilitysafeguards@ahaconsulting.com.au)



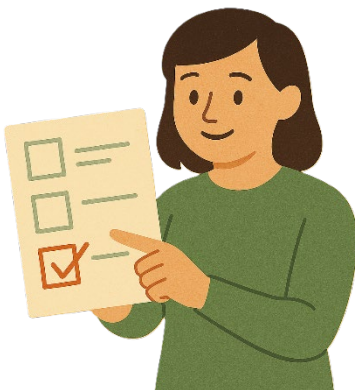
Each part will have some

- Information
- Questions.



There are **no** right or wrong answers.

Do your best.



You can choose what questions to answer.

You do **not** have to answer them all.



You need to do **part 1** first.

This is **part 1**.

# About you



We have some questions about you.

You can choose which ones you answer.

This helps us understand who has shared their ideas with us.



How old are you.

Please write your answer in the box.



What is your **gender**.

People say what gender they are.

They might be

- ☐ A man
- ☐ A woman
- ☐ A different gender
- ☐ No gender.

Please write your answer in the box.

# Who you are



Tick all that you are

- Person with disability



- Friend



- Family member



- Supporters of people with disability



- **Disability Representative Organisation**

We call it **DRO** for short.



- Disability support **providers**

Providers get money to help support you.

You might use money from your NDIS plan to pay them.





- Organisations that do **not** work for the government

They can be called **peak bodies**.



- Disability support workers



- Workers in **mainstream services**

Mainstream services are other supports you get from government services like

- Health
- Aged care
- Mental health services.

Mainstream services are supports everyone can access.



- People who do research



- People who know a lot about
- Quality
- Safeguarding
- Disability services



- Someone else.

# What is your disability



If you are a person with disability

Please write your disability in the box.

You can explain it in any way you like.

# Where do you live



What area do you live in

- Capital city



- Regional town or city



- Rural or remote area.



What state or territory do you live in.

Please write your answer in the box

# What groups are you part of



Are you part of any of these groups.

Tick all that you are part of.



- First Nations people



- LGBTQIA+ people

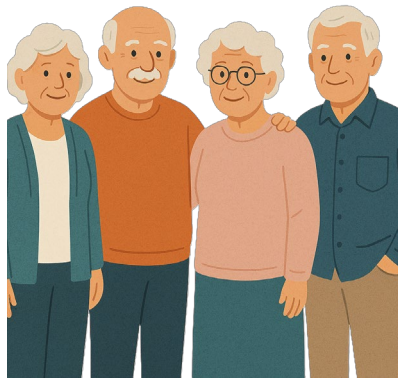




- People who speak different languages



- People from different cultures



- Older people.



Thank you for doing **part 1**.

Please do **part 2** next.



You can take a break if you need it.